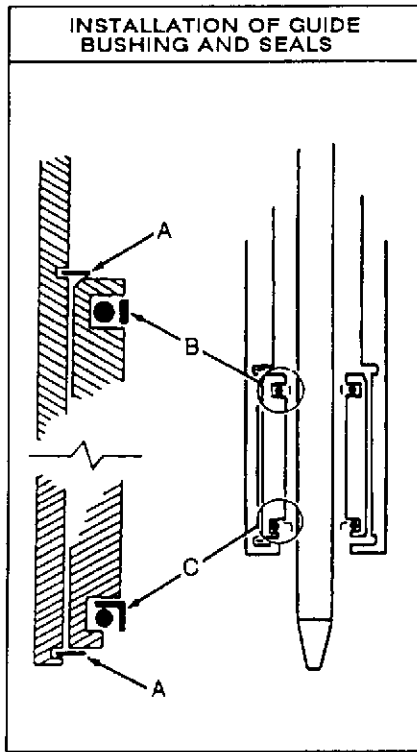
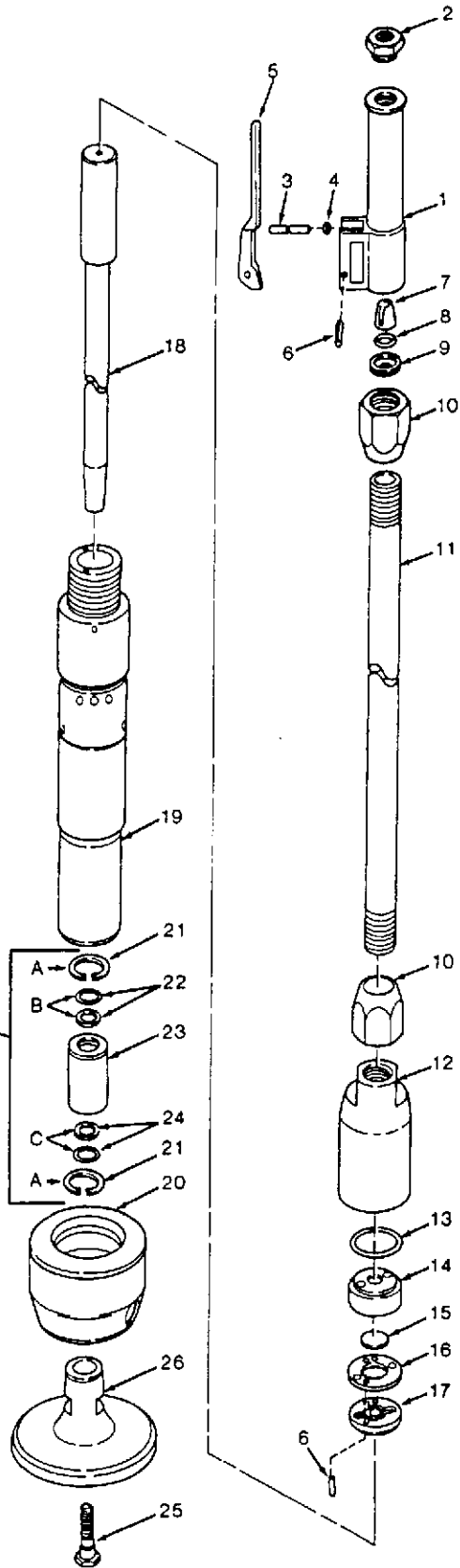


# MBT-6 ILLUSTRATION

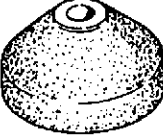
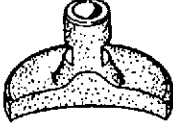
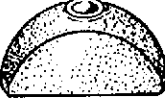
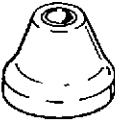


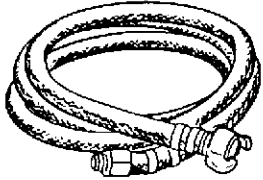
For Parts Call Tools Renewed Inc. 800-247-3639  
Fax: 860-665-9821 Email: toolsrenewed@snet.net



REFER TO INSERT FOR INSTALLATION



## OPTIONAL ACCESSORIES

<p><b>30</b></p>  <p><b>6" DIAMETER MALLEABLE IRON BUTT</b></p>	<p><b>31</b></p>  <p><b>POLE BUTT</b></p>	<p><b>32</b></p>  <p><b>RECTANGULAR POLE BUTT MALLEABLE IRON</b></p>
<p><b>33</b></p>  <p><b>4" DIAMETER ALUMINUM BUTT</b></p>	<p><b>34</b></p>  <p><b>3" DIAMETER ALUMINUM BUTT</b></p>	<p><b>40</b></p>  <p><b>3/8" NPT INLET SWIVEL</b></p>
<p><b>41</b></p>  <p><b>WHIP HOSE</b></p>		

## PARTS LIST

INDEX NO.	PART NUMBER	QTY. REQ.	DESCRIPTION	INDEX NO.	PART NUMBER	QTY. REQ.	DESCRIPTION
1	68722626	1	Handle, Throttle Bare	<b>Optional Butts and Accessories</b>			
2	68722224	1	Bushing, Air Inlet	30	250034-783	1	Butt, Malleable Iron 6" Diameter
3	68722624	1	Pin, Push Throttle Valve	31	250034-467	1	Butt, Half Moon Pole - Iron
4	68520851	1	O-Ring, Push Pin	32	250034-782	1	Butt, 2 1/4" x 5 5/8" Rectangular - Iron
5	68722627	1	Lever, Throttle Valve	33	250034-784	1	Butt, 4" Diameter - Aluminum
6	68VV5628	2	Pin	34	250034-785	1	Butt, 3" Diameter - Aluminum
7	68721468	1	Valve, Throttle		250035-320	1	Butt, 5" Diameter - Neoprene (Not Shown)
8	68CJ0181	1	O-Ring	40	250012-532	1	3/8" NPT Inlet Swivel
9	68722621	1	Seat, Throttle Valve	41	250031-645	1	Hose, Whip 1/2" ID x 8' w/#3/8" NPT swivel
10	68722622	2	Nut, Lock Connecting Pipe				
11	68722623	1	Pipe, Connecting				
12	68722615	1	Head, Cylinder				
13	68CJ0032	1	O-Ring, Valve Seat				
14	68722617	1	Seat, Valve Upper				
15	68ML3024	1	Disc, Valve				
16	68722619	1	Guide, Valve Disc				
17	68722616	1	Seat, Valve Lower				
18	68722614	1	Piston				
19	68722613	1	Cylinder				
20	68722600	1	Deflector, Exhaust				
21	68524214	2	Ring, Snap				
22	68524215	1	Seal, Dust Upper				
23	68722618	1	Bushing, Piston Guide				
24	68524216	1	Seal, Dust Lower				
25	68722620	1	Screw, Butt Clamp				
26	68722625	1	Butt, Steel 6" Diameter				

## ON – THE – JOB TROUBLESHOOTING

### (M – SERIES BACKFILL TAMPER)

PROBLEM	PROBABLE CAUSE	REMEDY
Tool Runs Sluggish	Low Air Pressure at Tool	Increase Pressure to 90 – 100 PSI (6.2 to 6.9 bar)
	Insufficient Air Flow (CFM [L/S])	Check Hoses, etc. for Leaks
	Automatic Valve Clogged	Flush Tool with Mixture of Oil and Diesel Fuel
	Insufficient Lubrication	Add a Small Amount of Light – Weight Non – Detergent Oil into Hose.
Tool Runs Erratically	Osha (Velocity Valve) Tripping	Inspect Valve for Proper Sizing
	Air Pressure Too High at Tool	Reduce Pressure to 90 – 100 PSI (6.2 to 6.9 bar)
	Foreign Material in Tool Inlet	Remove Foreign Material
	Automatic Valve Sticking	Flush Tool With Mixture of Oil and Diesel Fuel. Reduce Amount of Oil/Moisture to Tool
	Excessive Moisture/Oil in Tool	Clear Hose(s) of Moisture/Oil
Tool Will Not Run (Air Blows thru Exhaust)	Automatic Valve Stuck	Flush Tool with Mixture of Oil and Diesel Fuel
	Dust Seals Worn	Replace Dust Seals
Tool Continues to Run	Throttle Valve Stuck	Flush Tool with Mixture of Oil and Diesel Fuel
Excessive Kick – Back	Air Pressure Too High at Tool	Reduce Pressure to 90 – 100 PSI (6.2 to 6.9 bar)

If suggested remedies fail to correct problem, disassembly and inspection must be performed to determine cause.

For Parts Call Tools Renewed (800) 247-3639 Fax (860) 665-9821