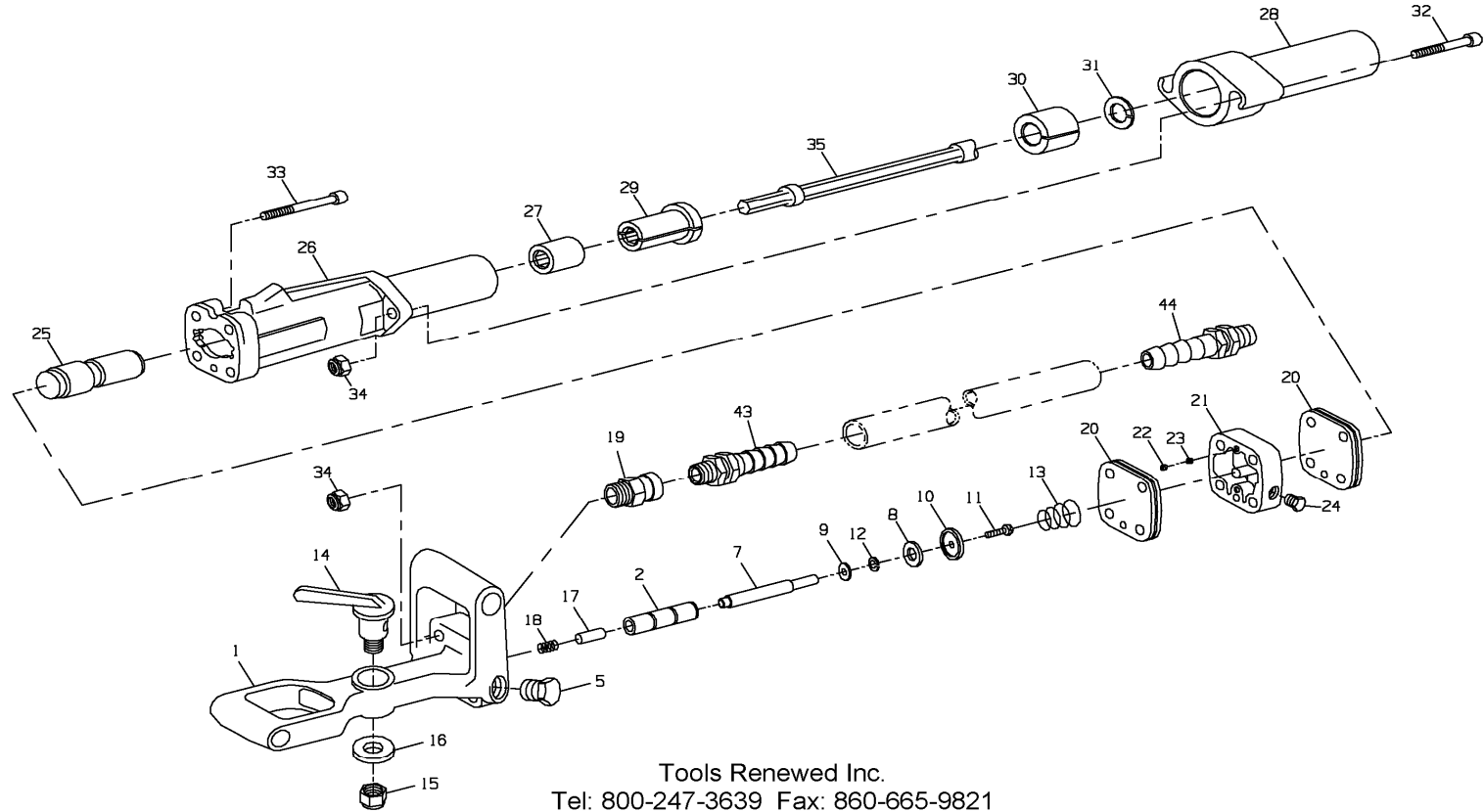


# Ingersoll-Rand MT-4 Tie Tamper

Ingersoll-Rand MT4 Tie Tamper



Tools Renewed Inc.  
Tel: 800-247-3639 Fax: 860-665-9821  
Email: [sales@toolsrenewed.com](mailto:sales@toolsrenewed.com)  
Web: [www.toolsrenewed.com](http://www.toolsrenewed.com)

### Ingersoll-Rand MT-4 Tie Tamper

Index	Description	Part No.	Index	Description	Part No.
	Handle Shaft Assembly	MT4-AD3	26	Barrel	MT4-4
1	Handle Shaft	MT4-D3	*	Warning Label	WARNING-6-99
2	Throttle Valve Bushing	MT4-503A	27	Fixed Nozzle	MT1-6
5	Handle Plug	MT4-33	28	Steel Retainer	MT4-8
7	Throttle Valve	MT4-402		Quick-Change Steel	MT1-7A
8	Throttle Valve Face	MT4-159		Retainer (Standard)	MT6-14
9	Throttle Valve Face Washer	MT4-156	29	Loose Nozzle	MT6-32
10	Throttle Valve Face Cap	R4-157	30	Buffer	MP1-2
11	Valve Face Retaining Screw	4U-359	31	Buffer Washer	H3R-9B
12	Retaining Screw Lock Washer	H54U-352	32	Barrel Bolt (2)	
13	Throttle Valve Spring	T01-308	33	Handle Bolt (4)	
14	Throttle Handle	MT4-117	34	Barrel Bolt Nut or	MT4-40
15	Throttle Handle Nut	MT4-40	35	Handle Bolt Nut (6)	
16	Throttle Handle Washer	MT2-52		Plain Face Tie Tamper Steel	
17	Throttle Handle Stop Pin	MT2-59		3/8" x 3" Face	MT2-12-3/8
18	Stop Pin Spring	503-607		5/8" x 3" Face	MT2-12-5/8
19	Hose Coupling	F0-8-3/4"		3/4" x 3" Face	MT2-12-3/4
20	Gasket (2)	MT4-68A		7/8" x 3" Face	MT2-12-7/8
21	Lubricator Body	MT4-70		1-1/8" x 3" Face	MT2-12-1-1/8
22	Oiler Adjusting Screw (2)	R2-71	*	Toothed Cinder Tamper Steel	MT2-C12-3/4
23	Oiler Felt (8)	R2-75	*	Toothed Stone Ballast Tamper Steel	MT2-S12-5/8
24	Oil Chamber Plug	P25-227	*	Grease Gun	P25-228
25	Piston	MT4-5	43	Male Hose Coupling	MH-8-1/2
			44	Female Hose Coupling	FH-8-3/4

Tools Renewed Inc  
 Tel: 800-247-3639  
 Fax: 860-665-9821  
 Email: [sales@toolsrenewed.com](mailto:sales@toolsrenewed.com)  
 Web: [www.toolsrenewed.com](http://www.toolsrenewed.com)